

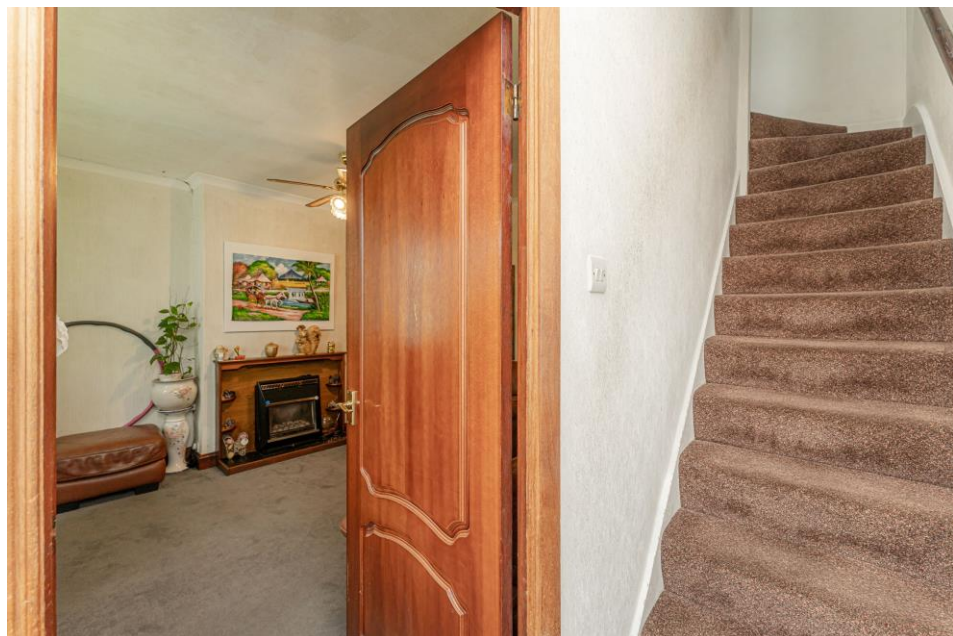


Albany Park Avenue, EN3 5NT

£389,995

Freehold

Castles



Albany Park Avenue, EN3 5NT

An extended mid-terraced 3 bedroom 1930's house located off Hertford Road close to Albany Park and a selection of local schools and amenities. Also within approximately 1m of Brimsdown British Rail station serving London Liverpool Street. Features include:- extended kitchen, off-street parking, two reception rooms, ground floor bathroom, outbuilding which could be used as an office/storage.

EPC Rating: D

Council Tax Band: C

£389,995 Freehold

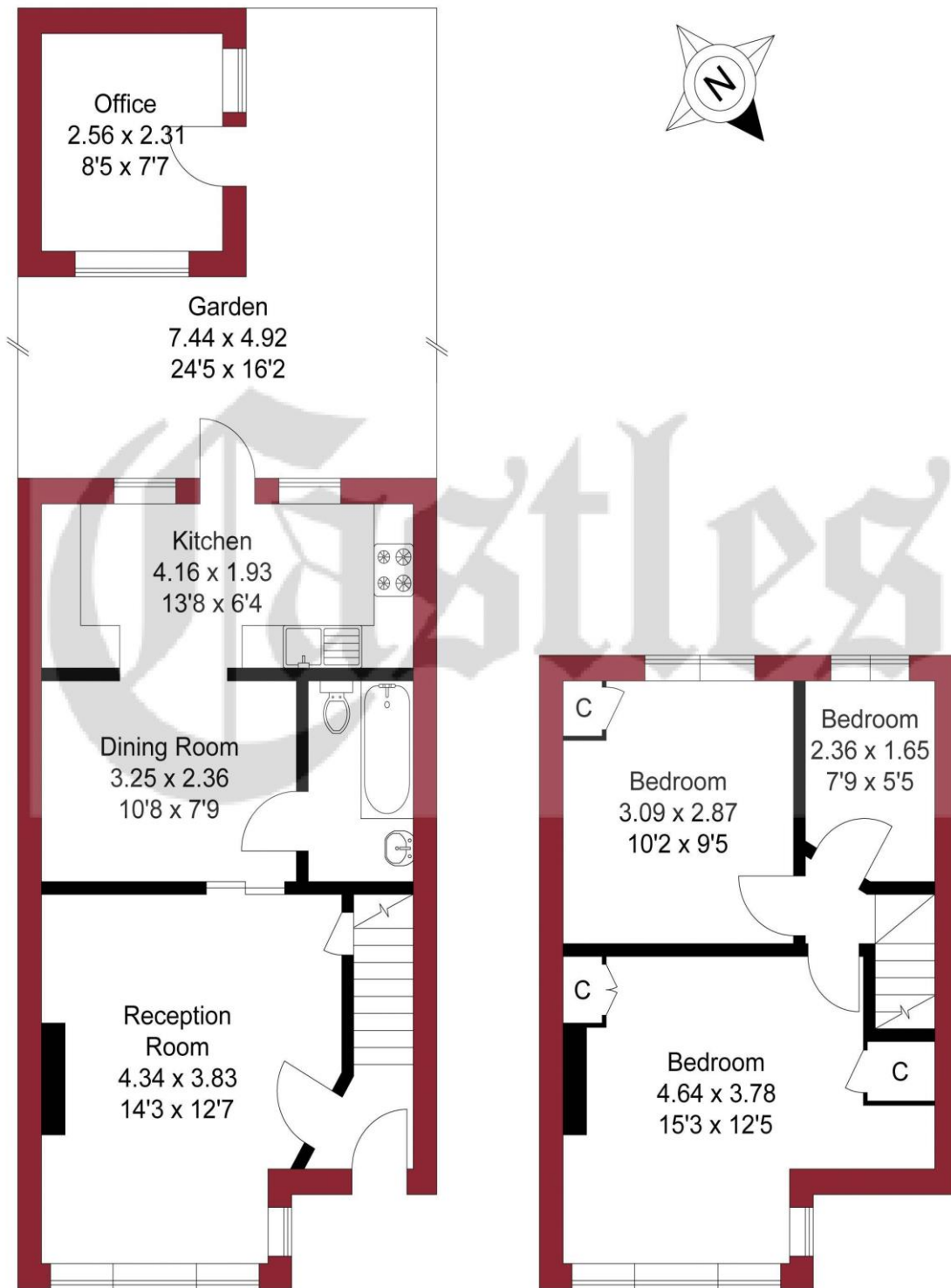


Castles

020 8804 8000
enfield@castles.london



APPROXIMATE GROSS INTERNAL AREA
 70.68 sqm / 760.79 sqft (Excluding Office)
 76.60 sqm / 824.51 sqft (Including Office)



GROUND FLOOR

FIRST FLOOR

THIS PLAN IS FOR ILLUSTRATION ONLY AND MAY NOT BE REPRESENTATIVE OF THE PROPERTY

An overview of Enfield

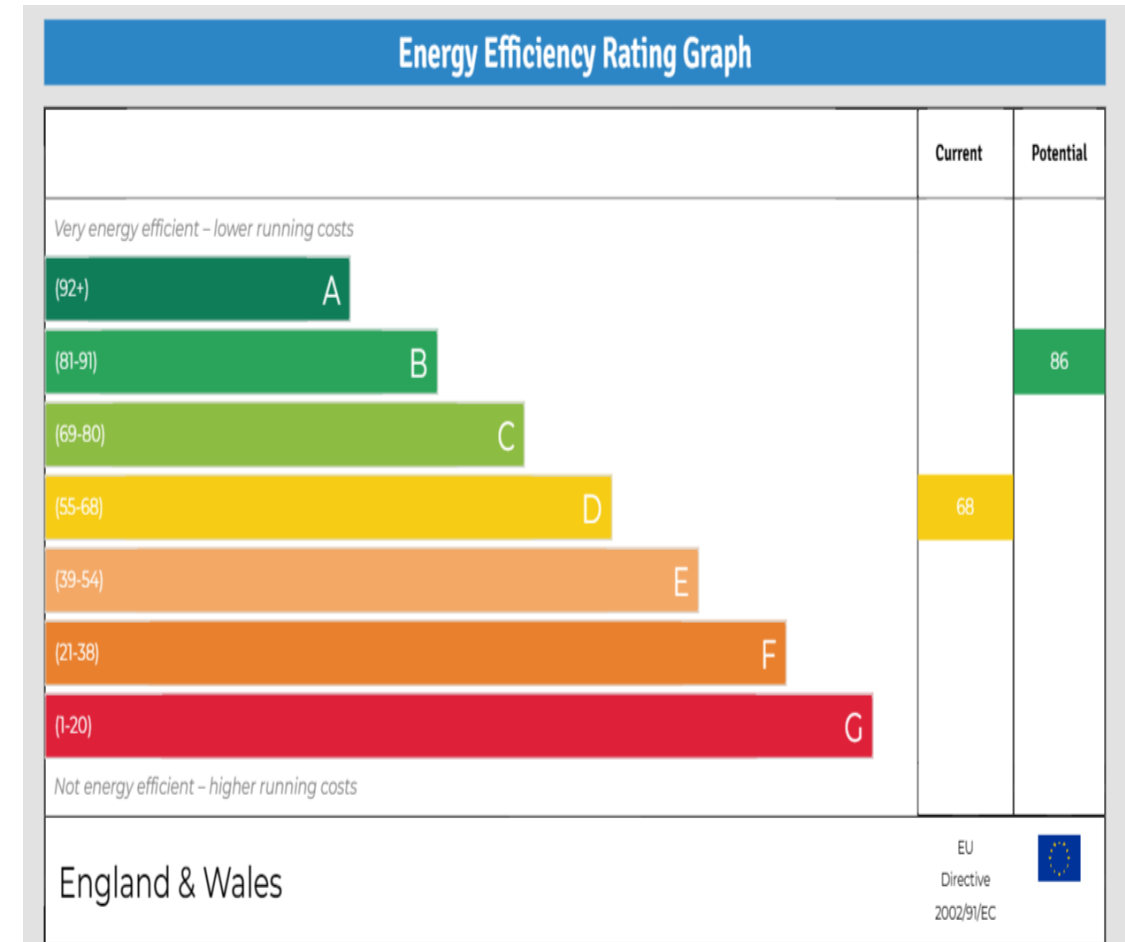
Enfield boasts a proud and distinguished history, home to several country houses and ancient monuments, the area also hosts a notable contingent of famous residents both past and present.

With affordable homes and a safe, green environment, Enfield attracts many buyers pleasantly surprised by the good value of property compared to some of the more pricey neighbouring boroughs.

On the lush, green perimeter of London, Enfield has excellent transport links with a quick and easy train journey into the City and West End.

There are a range of activities to keep residents busy in the borough with seven bustling shopping areas, 900 hectares of parks, three golf clubs, and numerous cinemas, theatres and museums. There is a diverse community residing in the area.

Notable for its range of great schools, vast green spaces and bustling retail centres, as well as good transport links to the rest of the city, Enfield is undoubtedly a thriving place to live and work and proves an excellent choice for first time buyers, families, young professionals and property investors alike."



243-245 Hertford Road
 Enfield, EN3 5JJ
 0208 804 8000
 enfield@castles.london
 www.castles.london

All details including floorplans are for representation purposes only and do not constitute a contract or warranty. Whilst every effort is made to ensure accuracy of descriptions and measurements, no responsibility is taken for errors, omissions and misstatements.

rightmove find your happy Zoopla Smarter property search PrimeLocation Find the home you deserve

The Property Ombudsman A free, fair and independent service for buyers, sellers, tenants and landlords of property in the UK.

NAEA National Association of Estate Agents Licensed Member