



Alexandra Road, N8

£575,000

Share of Freehold

Castles



Alexandra Road, N8

Occupying the upper floors of this period residence is this light and spacious four-bedroom conversion. Set on the popular Alexandra Road within a moments' walk of the amenities of Turnpike Lane and Wood Green shopping centre. Transport is provided by a multitude of local bus routes and nearby Hornsey over-ground station.

Further comprising separate kitchen, generous reception room, family bathroom and additional w.c. whilst further benefitting from off street parking. The property will be sold chain free and comes with a Share of the Freehold.

Local Authority: Haringey
Council Tax band: D

EPC Rating: D
Current: 64/D Potential: 74/C

£575,000 **Share of Freehold**

Castles


020 8348 5515
crouchend@castles.london

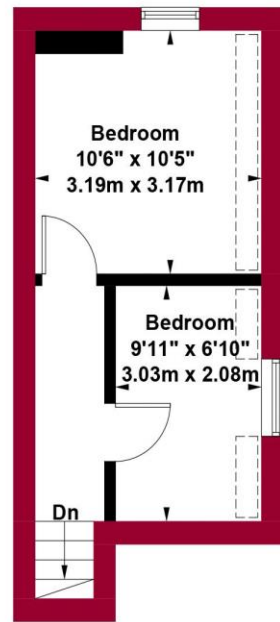


Alexandra Road, N8

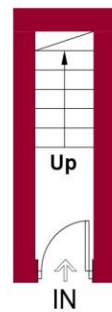
Approximate Gross Internal Area = 954 sq ft / 88.6 sq m

Restricted Height = 19 sq ft / 1.8 sq m

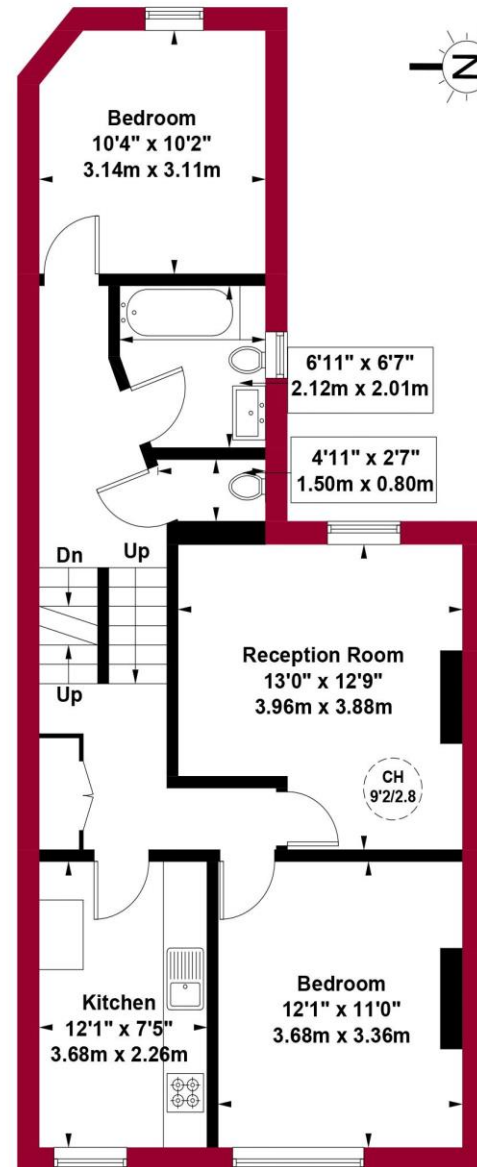
 = Reduced headroom below 1.5m / 5'0"



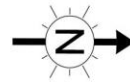
Second Floor
Gross Internal
Floor Area 221 sq ft / 20.5 sq m



Ground Floor (Entrance)
Gross Internal
Floor Area 27 sq ft / 2.5 sq m



First Floor
Gross Internal
Floor Area 706 sq ft / 65.6 sq m



An overview of Crouch End

Situated in a valley, Crouch End is overlooked by nearby Muswell Hill, Highgate and Alexandra Palace. The leafy and hilly surroundings enhance the village feel. A vast array of character period properties are progressively being combined with modern high specification developments. With its diverse independent retailers and high street stores accompanied with good schools and parks this bohemian and vibrant location ensures Crouch End remains a desirable place to reside. Packed with lots to see and do with great feeling of community spirit. The area is dominated by a vibrant 'Village' with the landmark Clock tower at the centre of attraction with a fine range of independent retailers, coffee shops, bars and restaurants, while there is a distinct open feel to the area, owing to a large number of green spaces including Parkland walk.

History

Once a medieval route from London to the north of England, Crouch End, which was governed as part of Hornsey, was a mainly wooded area containing farms and villas, including Crouch Hall, built in the 17th century at the intersection of what came to be known as Crouch End. The area changed rapidly in the late 18th century from a largely rural area to a prosperous middle-class suburb, due to a sharp rise in professionals, including clerical workers moving to the area looking to commute into the city, thanks to the development of the railway in the area. Many of the old houses were demolished and replaced with housing aimed at the middle-class.

Housing Stock

With its vast array of both Edwardian and Victorian properties and the progressive emergence of modern high specification developments, Crouch End attracts many different types of property buyers and tenants, from professionals and families to first-time buyers and students. It is also very popular with buy-to-let investors. Property prices and rents reflect the predominately affluent area.

Shopping, food and drink

Crouch End offers an amazing array of shops, services, restaurants, bars and cafes, with a perfect blend of old and new. Shops on the Broadway include upmarket restaurants and supermarkets as well as numerous cafes and bars spilling out onto the pavements. There is also a long-standing baker, Dunn's, as well as two butchers, a fishmonger and a greengrocer. Whether one is looking for traditional English grub or somewhere that serves something a little more exotic, there is no shortage of gastropubs, elegant restaurants, wine bars and pubs to suit all tastes.

Recreational Grounds & Amenities

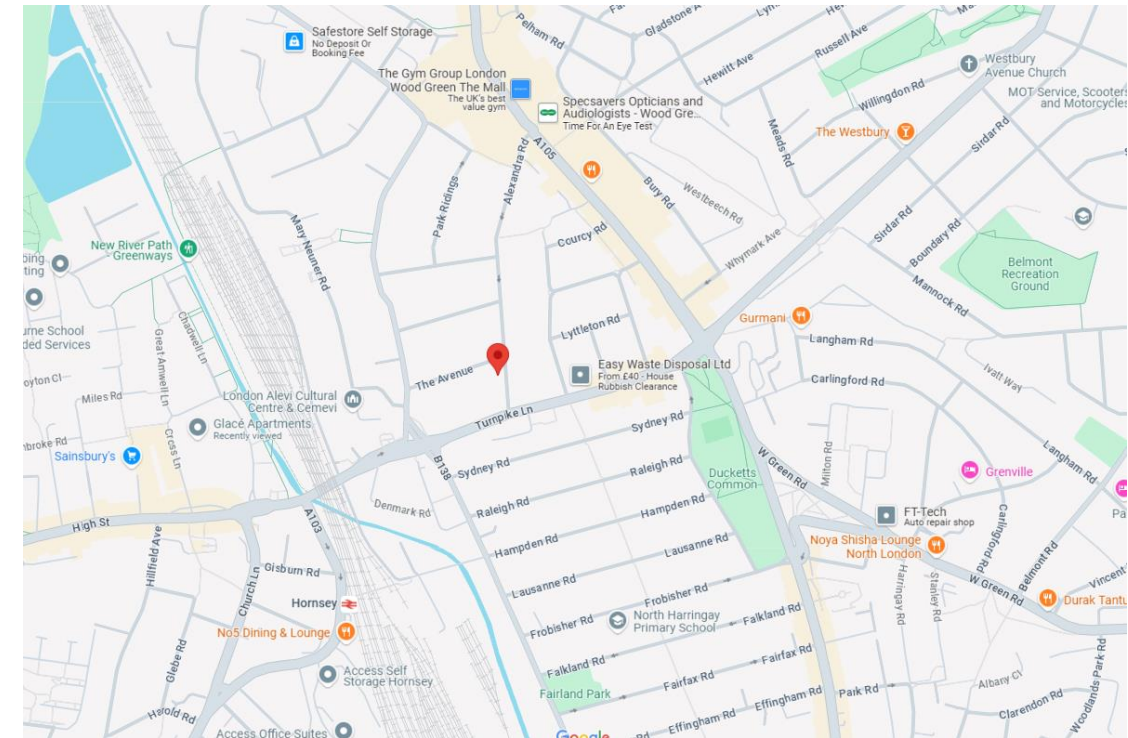
There are plenty of open green spaces in and around Crouch End, including Highgate Woods to the west, with Queen's Wood adjacent. Additionally, Alexandra Park is to the north of Crouch End, with Finsbury Park to the south. These two parks are connected by 'The Parkland Walk', a former railway line. Other parks in the area include Stationers Park and Priory Park. In addition there are a number of fitness centres, Tennis & Cricket clubs and Park Road swimming pool.

Emergency services

Crouch End is considered a safe neighbourhood. It is served by Highgate Police Station on Archway Road and Muswell Hill Police Station on Fortis Green. Hornsey Fire Station is located on Priory Road. There are a number of GP & Dental practices including The Vale Practice in Park Road, Queenswood Medical Practice at 151 Park Road, Crouch End Health Centre at 45 Middle Lane and Muswell Practice (Pinnacle Close at top of Muswell Hill). The nearest hospital is The Whittington & University College Hospital

Transportation

There are plenty of transport options in and around Crouch End. The nearest Tube and train stations are Highgate (Northern Line, Zone 3), Finsbury Park (Overground, Piccadilly & Victoria, Zone 2), Crouch Hill (Overground, Zone 3), Hornsey (Overground, Zone 3), Haringey (Overground, Zone 3) and Archway (Northern Line, Zone 2/3). Buses and night buses, including the 41, 91, 210, W3, W5, W7, N41 and N91, provide a good service to other parts of London.



Castles

12 Topsfield Parade, Crouch End
London N8 8PR
020 8348 5515
crouchend@castles.london
www.castles.london

All details including floorplans are for representation purposes only and do not constitute a contract or warranty. Whilst every effort is made to ensure accuracy of descriptions and measurements, no responsibility is taken for errors, omissions and misstatements.

rightmove
find your happy

Zoopla
Smarter property search

PrimeLocation
Find the home you deserve

OnTheMarket.com

The Property Ombudsman

A free, fair and independent service for buyers, sellers, tenants and landlords of property in the UK.

NAEA
National Association of Estate Agents
LICENSED MEMBER

RICS Certified Property Measurer

This plan is for layout guidance only and is not drawn to scale unless stated. All dimensions, including windows, doors, and the Total Gross Internal Area (GIA), are approximate. For precise measurements, please consult a qualified architect or surveyor before making any decisions based on this plan.

Castles