



Vernon Road, N8

£675,000

Freehold

Castles



Vernon Road, N8

Set in a prime location just off Turnpike Lane is this three-bedroom, terraced period house. The property offers a host of character features although requires modernisation.

Ideally located within easy reach of both Turnpike Lane tube station and Hornsey Overground whilst being a short stroll to Wood Green shopping centre.

Further comprising two reception rooms, dining room leading onto kitchen and downstairs bathroom with separate w.c. additional upstairs bathroom and access to a generous rear garden.

Local Authority: Haringey
Council Tax band: D

EPC Rating: D
Current: 60/D Potential: 85/B

£675,000

Freehold

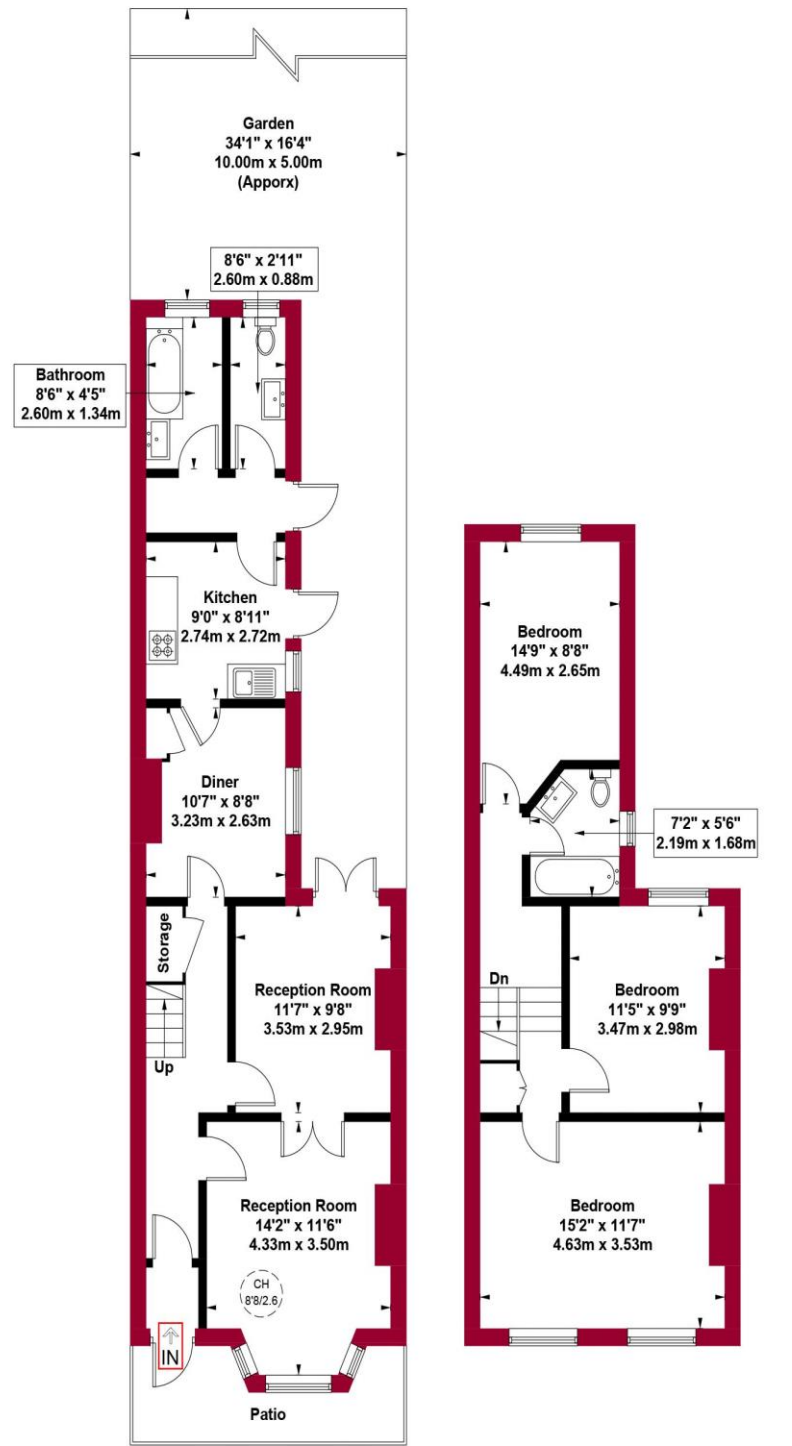
Castles

020 8348 5515
crouchend@castles.london



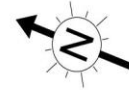
Vernon Road, N8

Approximate Gross Internal Area = 1214 sq ft / 112.8 sq m



Ground Floor
Gross Internal
Floor Area 673 sq ft / 62.5 sq m

First Floor
Gross Internal
Floor Area 541 sq ft / 50.3 sq m



An Overview of Hornsey

Hornsey is a district of north London, England in the London Borough of Haringey. It is an inner-suburban, for the most part residential, area. It adjoins green spaces Queen's Wood and Alexandra Park to the north.

North of Hornsey High Street, and immediately to its south, some of the area is public sector housing, surrounded by the late Victorian terraces developed by builders such as John Farrer. Between the western end of the High Street and the bottom of Muswell Hill, the character of the area changes; most being part of the Warner Estate built up with large late Victorian houses. To the south west of the High Street is Priory Park.

The High Street has a number of shops, restaurants and pubs. The eastern section retains strips of grassed areas. The 13th-century tower is all that remains of St Mary's Church. The Tower has recently been used as The Intimate Space, which claims to be London's smallest performance space.

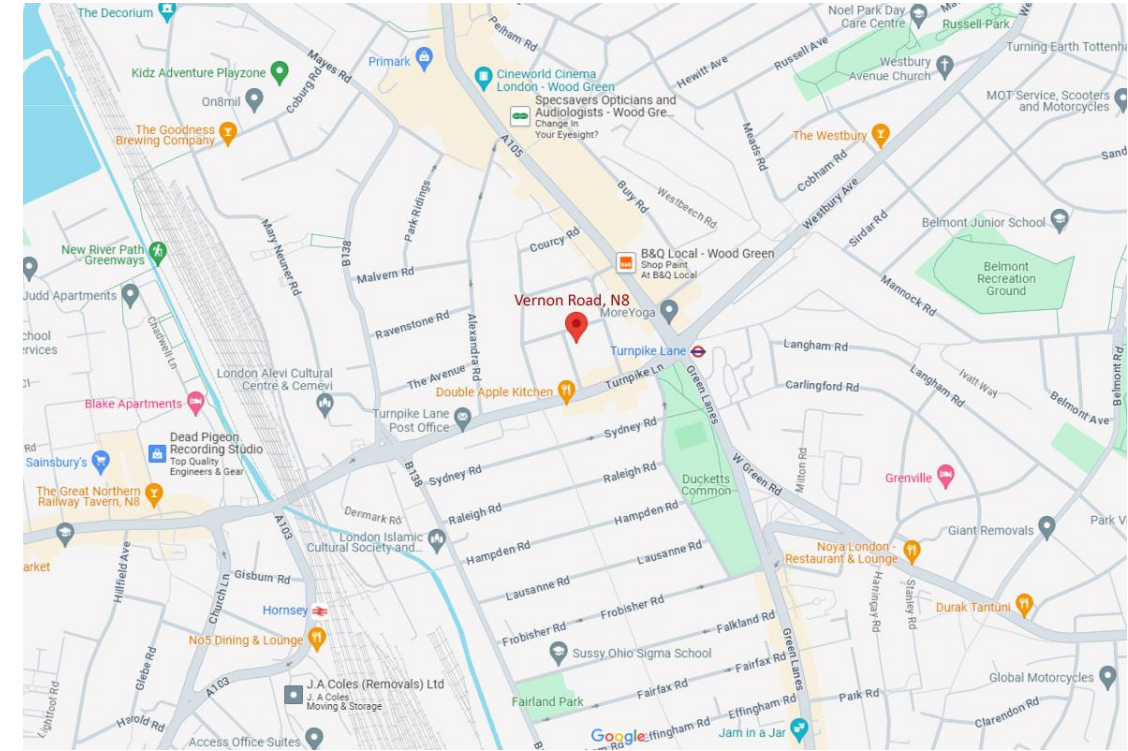
Much of Hornsey was built up in Edwardian times, but the tower of the original parish church still stands in its ancient graveyard in Hornsey High Street, at the centre of the old village. Other notable places are the Doragh Gasworks, the former Hornsey Town Hall in Crouch End, and Highpoint and Cromwell House in Highgate.

Education

- Greig City Academy
- Hornsey School for Girls
- Highgate Wood Secondary School
- North London Rudolf Steiner School

Nearest stations

- Hornsey
- Haringay
- Turnpike Lane



Castles

12 Topsfield Parade, Crouch End
London N8 8PR
020 8348 5515
crouchend@castles.london
www.castles.london

All details including floorplans are for representation purposes only and do not constitute a contract or warranty. Whilst every effort is made to ensure accuracy of descriptions and measurements, no responsibility is taken for errors, omissions and misstatements.



A free, fair and independent service for buyers, sellers, tenants and landlords of property in the UK.



NAEA



This plan is for layout guidance only and is not drawn to scale unless stated. All dimensions, including windows, doors, and the Total Gross Internal Area (GIA), are approximate. For precise measurements, please consult a qualified architect or surveyor before making any decisions based on this plan.

