

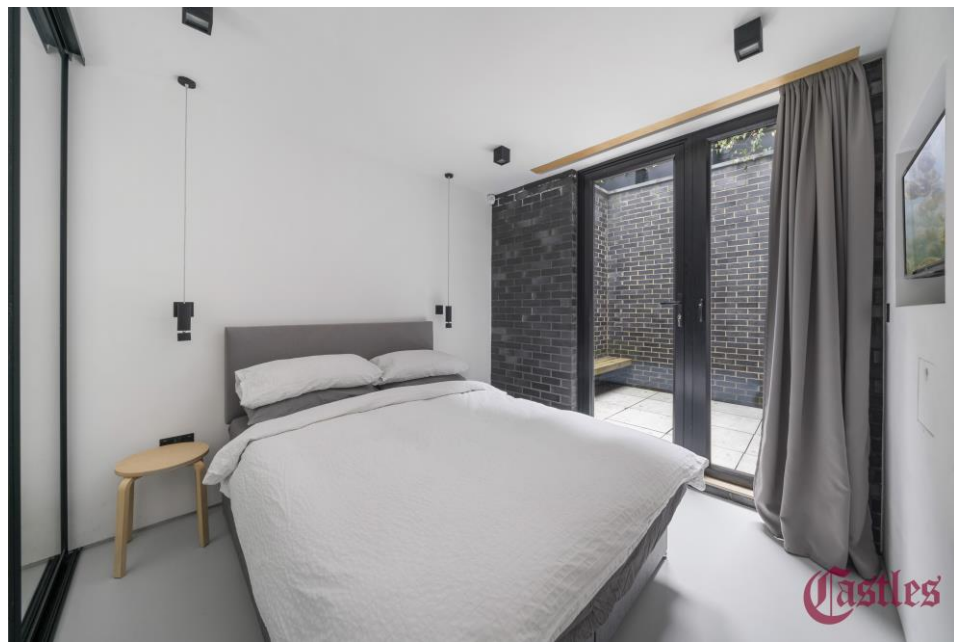


Clifton Road, N8

Guide Price £1,800,000

Freehold

Castles



Clifton Road, N8

Set over three floors on one of Crouch End's most premier turnings is this inspiring three-bedroom contemporary home with en-suite, family bathroom, guest w.c., study area, open-planned kitchen/reception and first floor reception leading onto roof garden. The building is a true statement of architectural genius from local and highly reputable Crawford Architects fulfilling mutual clients desired features and layouts and realising a complex design process to create flexible and beautiful living spaces. Externally the bold black brick and charred larch cladding, stands confidently on the street. Beyond the front boundary wall and through the forecourt, you enter a home for urban living. The black brick continues inside, and a muted material palette of soft greys and birch-faced plywood is introduced. This palette of materials continues throughout the house, employed from the bathrooms through to the structural glulam beams at first floor. Natural daylight, pulled into the home from high level, casts shadows and reflects over materials, finishes and spaces. The complexities of maximising natural daylight within the dwelling inspired the initial design concept; with skylights, internal walk-on glass, a lower ground courtyard, and floor to ceiling windows ensuring wherever you are in the home you are connected to the outside. In line with Eco demands, the property features a sedum roof, air source heat pump and solar panels, resulting in a high B EPC rating. Further benefitting from bespoke kitchen, storage cupboards, resin floors throughout, under-floor heating and siemens appliances. This truly unique home is well positioned on the favoured Highgate periphery within a short walk to a host of desired amenities, including Crouch End Broadway and Highgate underground station.

Offered with no onward chain.

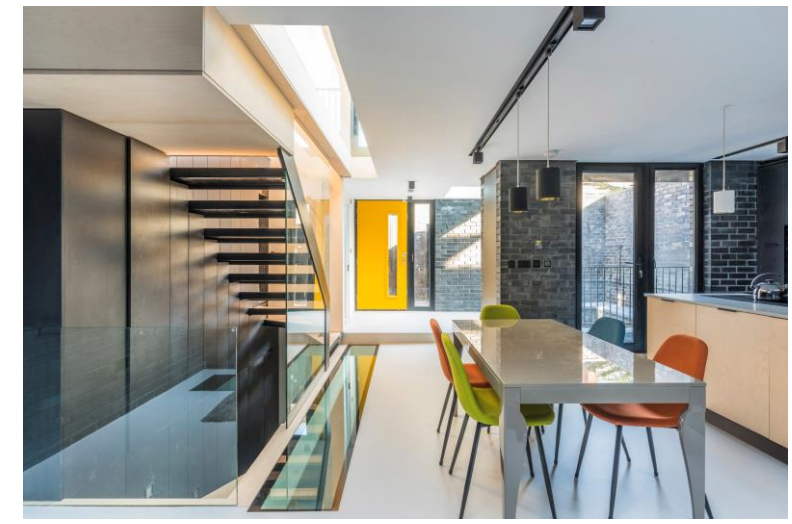
Local Authority: Haringey
Council Tax band: G

EPC Rating: B
Current: 87/B Potential: 89/B

Guide Price £1,800,000 Freehold

Castles

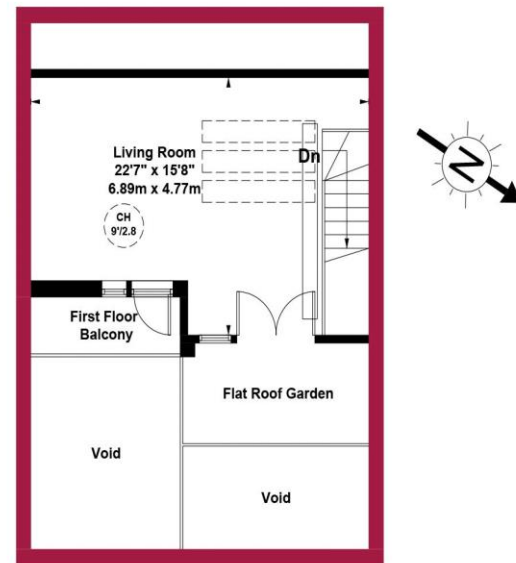
020 8348 5515
crouchend@castles.london



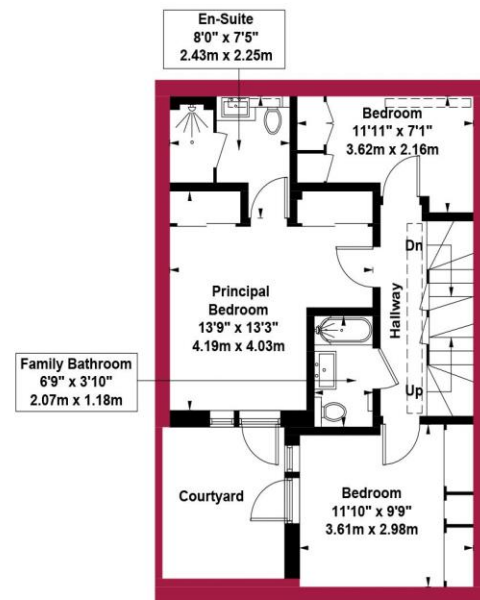
Castles

Clifton Road, N8

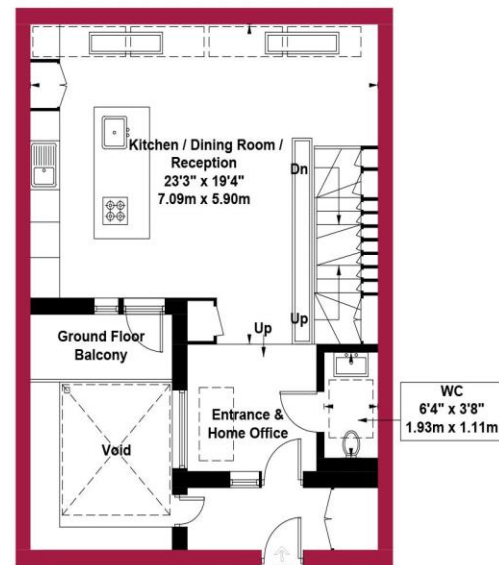
Approximate Gross Internal Area = 1413 sq ft / 131.3 sq m



First Floor
Gross Internal
Floor Area 319 sq ft / 29.6 sq m



Lower Ground Floor
Gross Internal
Floor Area 511 sq ft / 47.5 sq m



Upper Ground Floor
Gross Internal
Floor Area 583 sq ft / 54.2 sq m

An overview of Crouch End

Situated in a valley, Crouch End is overlooked by nearby Muswell Hill, Highgate and Alexandra Palace. The leafy and hilly surroundings enhance the village feel. A vast array of character period properties are progressively being combined with modern high specification developments. With its diverse independent retailers and high street stores accompanied with good schools and parks this bohemian and vibrant location ensures Crouch End remains a desirable place to reside. Packed with lots to see and do with great feeling of community spirit. The area is dominated by a vibrant 'Village' with the landmark Clock tower at the centre of attraction with a fine range of independent retailers, coffee shops, bars and restaurants, while there is a distinct open feel to the area, owing to a large number of green spaces including Parkland walk.

History

Once a medieval route from London to the north of England, Crouch End, which was governed as part of Hornsey, was a mainly wooded area containing farms and villas, including Crouch Hall, built in the 17th century at the intersection of what came to be known as Crouch End. The area changed rapidly in the late 18th century from a largely rural area to a prosperous middle-class suburb, due to a sharp rise in professionals, including clerical workers moving to the area looking to commute into the city, thanks to the development of the railway in the area. Many of the old houses were demolished and replaced with housing aimed at the middle-class.

Housing Stock

With its vast array of both Edwardian and Victorian properties and the progressive emergence of modern high specification developments, Crouch End attracts many different types of property buyers and tenants, from professionals and families to first-time buyers and students. It is also very popular with buy-to-let investors. Property prices and rents reflect the predominately affluent area.

Shopping, food and drink

Crouch End offers an amazing array of shops, services, restaurants, bars and cafes, with a perfect blend of old and new. Shops on the Broadway include upmarket restaurants and supermarkets as well as numerous cafes and bars spilling out onto the pavements. There is also a long-standing baker, Dunn's, as well as two butchers, a fishmonger and a greengrocer. Whether one is looking for traditional English grub or somewhere that serves something a little more exotic, there is no shortage of gastropubs, elegant restaurants, wine bars and pubs to suit all tastes.

Recreational Grounds & Amenities

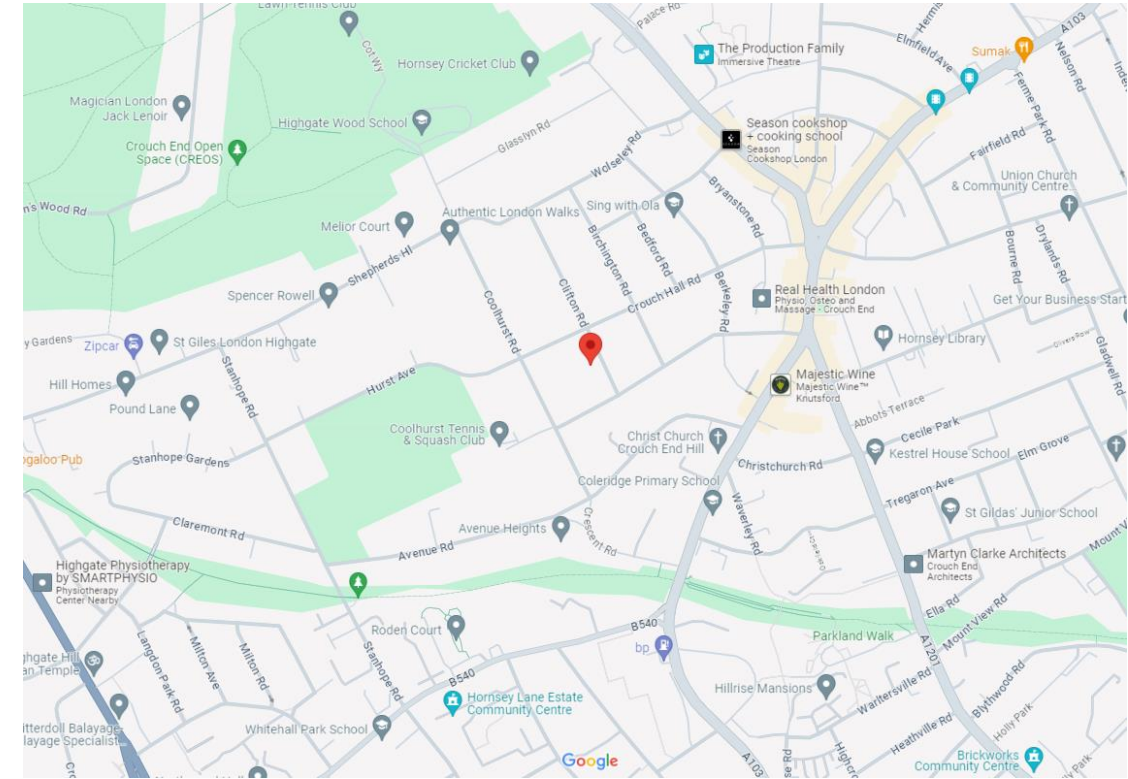
There are plenty of open green spaces in and around Crouch End, including Highgate Woods to the west, with Queen's Wood adjacent. Additionally, Alexandra Park is to the north of Crouch End, with Finsbury Park to the south. These two parks are connected by 'The Parkland Walk', a former railway line. Other parks in the area include Stationers Park and Priory Park. In addition there are a number of fitness centres, Tennis & Cricket clubs and Park Road swimming pool.

Emergency services

Crouch End is considered a safe neighbourhood. It is served by Highgate Police Station on Archway Road and Muswell Hill Police Station on Fortis Green. Hornsey Fire Station is located on Priory Road. There are a number of GP & Dental practices including The Vale Practice in Park Road, Queenswood Medical Practice at 151 Park Road, Crouch End Health Centre at 45 Middle Lane and Muswell Practice (Pinnacle Close at top of Muswell Hill). The nearest hospital is The Whittington & University College Hospital

Transportation

There are plenty of transport options in and around Crouch End. The nearest Tube and train stations are Highgate (Northern Line, Zone 3), Finsbury Park (Overground, Piccadilly & Victoria, Zone 2), Crouch Hill (Overground, Zone 3), Hornsey (Overground, Zone 3), Haringey (Overground, Zone 3) and Archway (Northern Line, Zone 2/3). Buses and night buses, including the 41, 91, 210, W3, W5, W7, N41 and N91, provide a good service to other parts of London.



Castles

12 Topsfield Parade, Crouch End
London N8 8PR
020 8348 5515
crouchend@castles.london
www.castles.london

All details including floorplans are for representation purposes only and do not constitute a contract or warranty. Whilst every effort is made to ensure accuracy of descriptions and measurements, no responsibility is taken for errors, omissions and misstatements.



A free, fair and independent service for buyers, sellers, tenants and landlords of property in the UK.



This plan is for layout guidance only and is not drawn to scale unless stated. All dimensions, including windows, doors, and the Total Gross Internal Area (GIA), are approximate. For precise measurements, please consult a qualified architect or surveyor before making any decisions based on this plan.

