

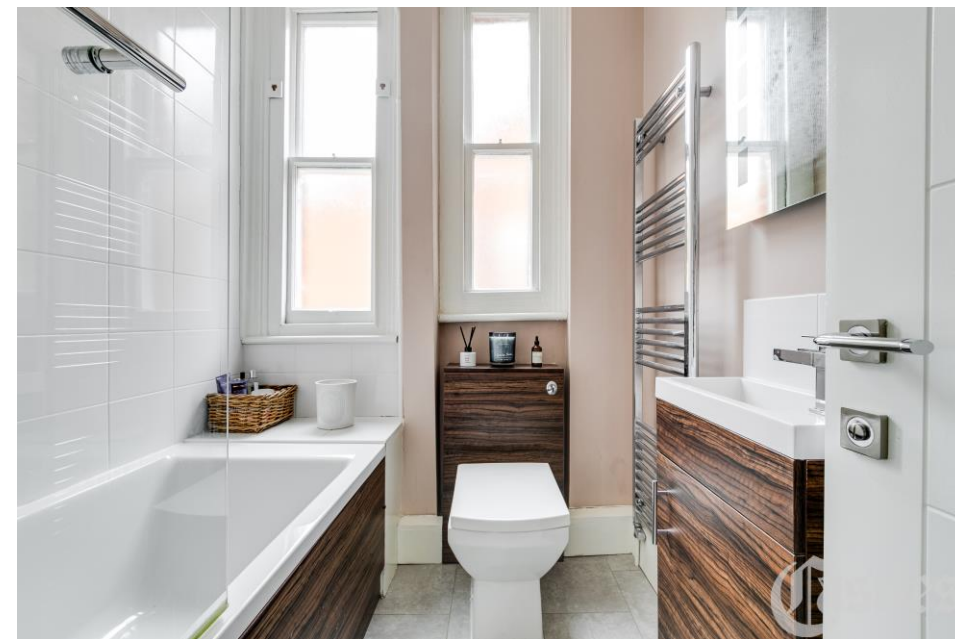


**Stanhope Gardens, N6**

£750,000

Share of Freehold

**Castles**



## Stanhope Gardens, N6

An exceptionally well-presented two double bedroom, first floor conversion set within a well-appointed, period residence equidistantly positioned between Highgate Village and Crouch End Broadway (*voted by the Sunday Times as the best place to live in London 2023*) with its great selection of cafes, restaurants, recreational grounds and facilities.

Further comprising spacious open-planned kitchen/reception, bathroom and en-suite to master bedroom. The property offers an abundance of light and airy rooms throughout with neutral, contemporary decor complementing the existing period features.

An early viewing is highly recommended.

Local Authority: Haringey

Council Tax band: E

EPC Rating: D

Current: 68/D Potential: 80/C

£750,000

Share of Freehold

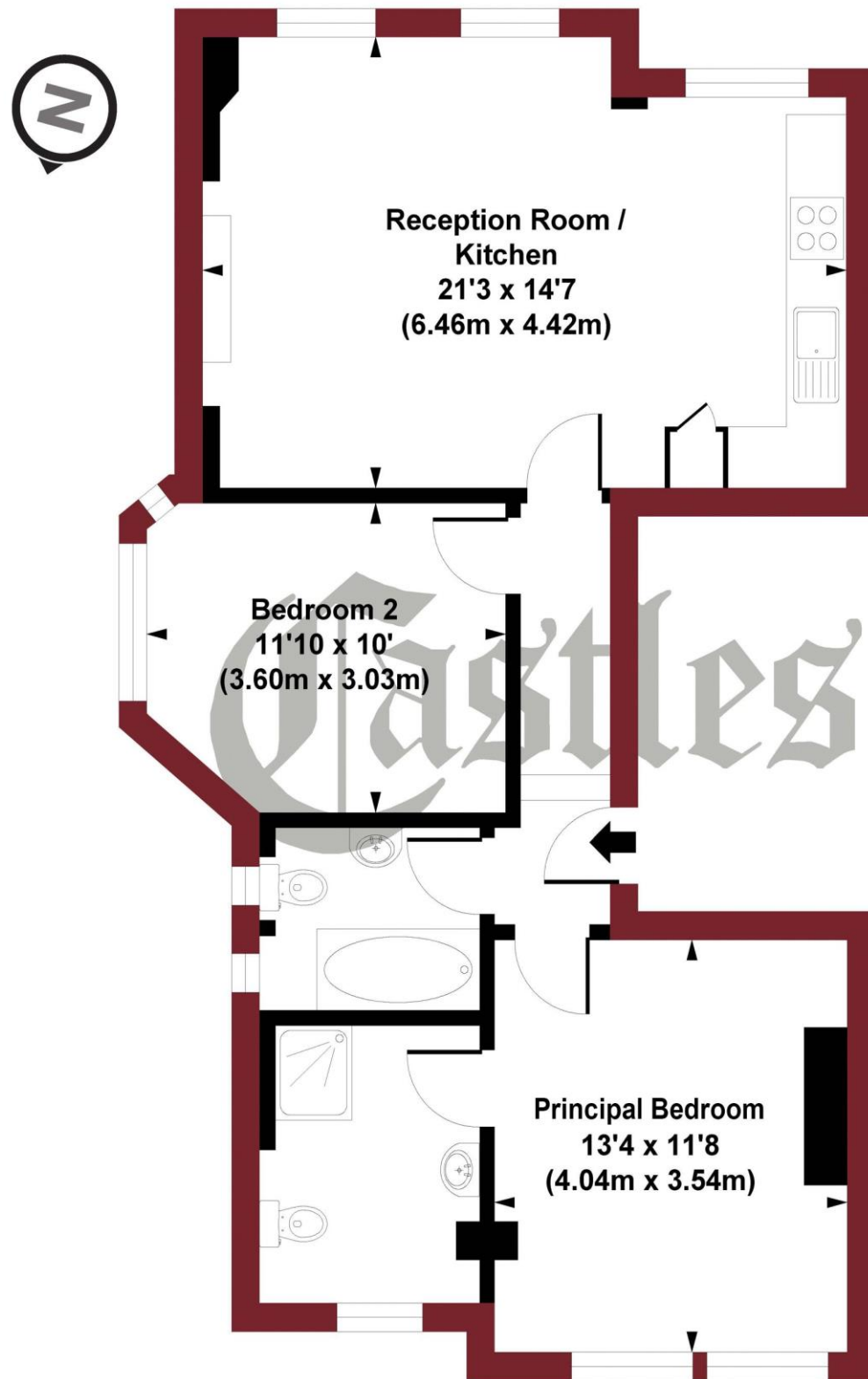
# Castles

020 8348 5515

[crouchend@castles.london](mailto:crouchend@castles.london)



**APPROXIMATE GROSS INTERNAL AREA**  
68.38 sq m / 736 sq ft



First Floor

THIS PLAN IS FOR ILLUSTRATION ONLY AND MAY NOT BE REPRESENTATIVE OF THE PROPERTY

### An Overview of Highgate

Highgate is divided between three London boroughs: Haringey in the north, Camden in the south and west, and Islington in the south and east. The postal district for Highgate is N6. It is one of the more expensive suburbs to live in and has an active conservation society, The Highgate Society, to protect its character.

Hampstead Lane and Highgate Hill contain the red brick Victorian buildings of Highgate School and its adjacent Chapel of St Michael. The school has played a paramount role in the life of the village and has existed on its site since its founding was permitted by letters from Queen Elizabeth I in 1565. Highgate is noteworthy for its Cemetery and Georgian architecture. It is also the location of Berthold Lubetkin's two Highpoint apartment buildings.

### EDUCATION

Many families come to Highgate to be close to the private schools, including the coeducational Highgate School and Channing School for girls. In the state sector options include boys' secondary school St Aloysius' College. State primary schools include St Michael's C of E Voluntary Aided Primary School, Highgate Primary School and outstanding Ofsted rated Coleridge school.

### GREEN SPACES

Highgate not only has broad swathes of its own woodland, but it is also within walking distance of some of London's most stunning landscapes. Locals take their pick of Hampstead Heath, Queen's Wood, Waterlow Park or Highgate Wood, and everyone will have their own favourite outdoor spot. For picturesque walks, the 70 acres of ancient woodland in Highgate Wood is a must. Music enthusiasts might like to stroll past Kenwood House on Hampstead Heath in the hopes of overhearing rehearsals for the summer concerts. Families often stop off at Waterlow Park, a friendly neighbourhood space given to the public by Sir Sidney Waterlow as a 'garden for the gardenless' in 1889.

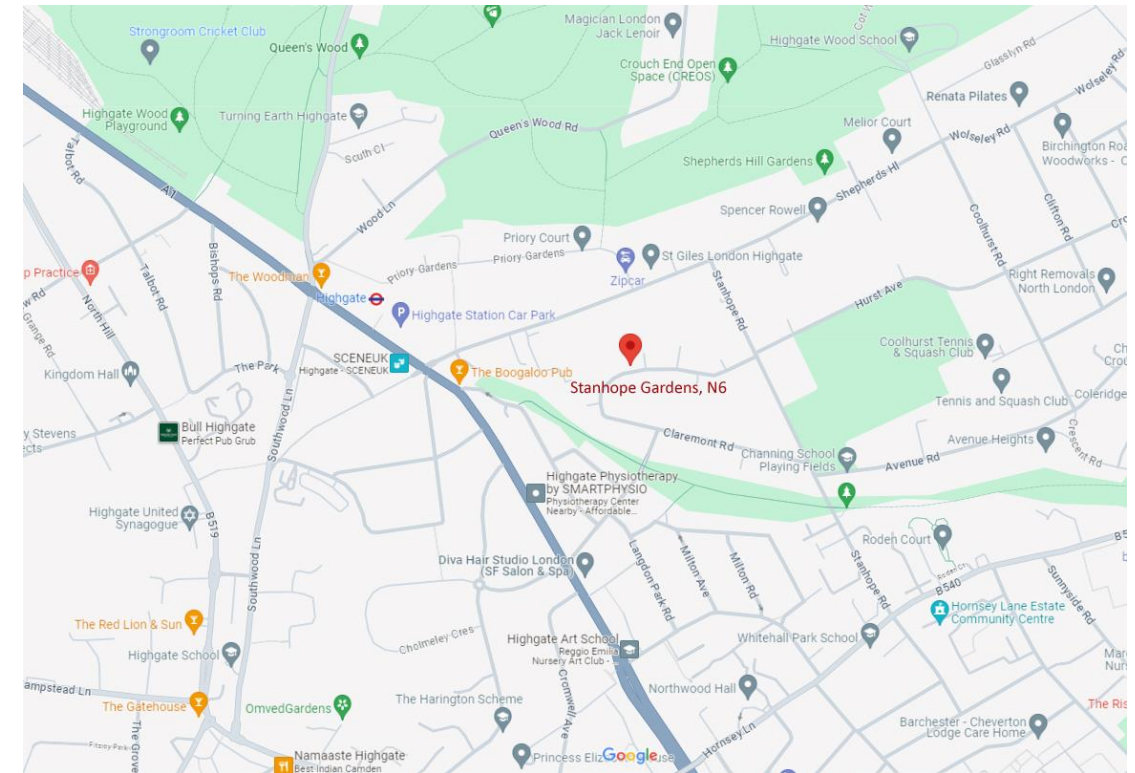
### TRANSPORT

**Underground services** from Highgate station in Zone 3 take just 20 minutes to Bank. Some locals choose to walk to nearby Archway as it is in Zone 2, one stop south of Highgate on the Northern line.

**Buses:** Local bus routes include numbers 143 (to Brent Cross), 210 (to Finsbury Park), and the 603 (to Muswell Hill). Both buses 214 and 217 (to Moorgate) operate 24 hour services.

**Cycle:** The City is only about half an hour's ride away. The journey returning home is quicker as the bike lanes are more direct.

**Road:** Highgate is on the A1, which connects with Islington in the south and the M1 in the north.



# Castles

12 Topsfield Parade, Crouch End  
London N8 8PR  
020 8348 5515  
crouchend@castles.london  
www.castles.london

All details including floorplans are for representation purposes only and do not constitute a contract or warranty. Whilst every effort is made to ensure accuracy of descriptions and measurements, no responsibility is taken for errors, omissions and misstatements.



A free, fair and independent service for buyers, sellers, tenants and landlords of property in the UK.

