



Mandeville Road, EN3 6SH

£550,000

Freehold

Castles



Mandeville Road, EN3 6SH

A great investment opportunity. A Victorian terraced house converted into a 6 bedroom licensed HMO. All 6 bedrooms include wash hand basins and a bathroom is situated on both ground and first floors. Other features include; communal kitchen/diner, opportunity for front off-street parking (STPP), rear garden, close to Enfield Lock BR Station and local amenities, gas central heating throughout and double glazing. Potential rental income of approximately £40,000 - £45,000 per annum.

EPC Rating: D
Current: 66 Potential: 85

Council Tax Band: D

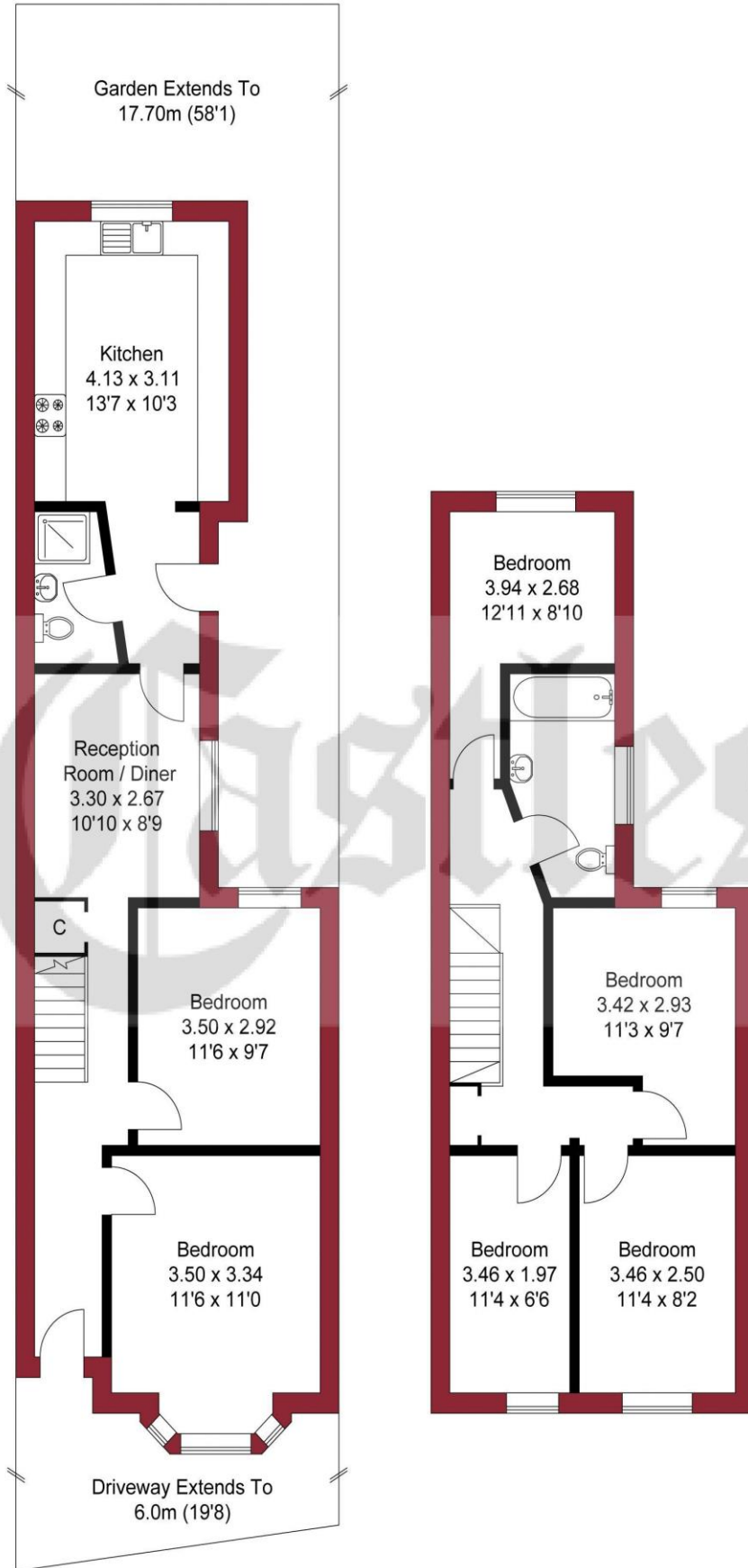
£550,000 Freehold

Castles

020 8804 8000
enfield@castles.london



APPROXIMATE GROSS INTERNAL AREA
109.78 sqm / 1181.66 sqft



GROUND FLOOR

FIRST FLOOR

THIS PLAN IS FOR ILLUSTRATION ONLY AND MAY NOT BE REPRESENTATIVE OF THE PROPERTY

An overview of Enfield

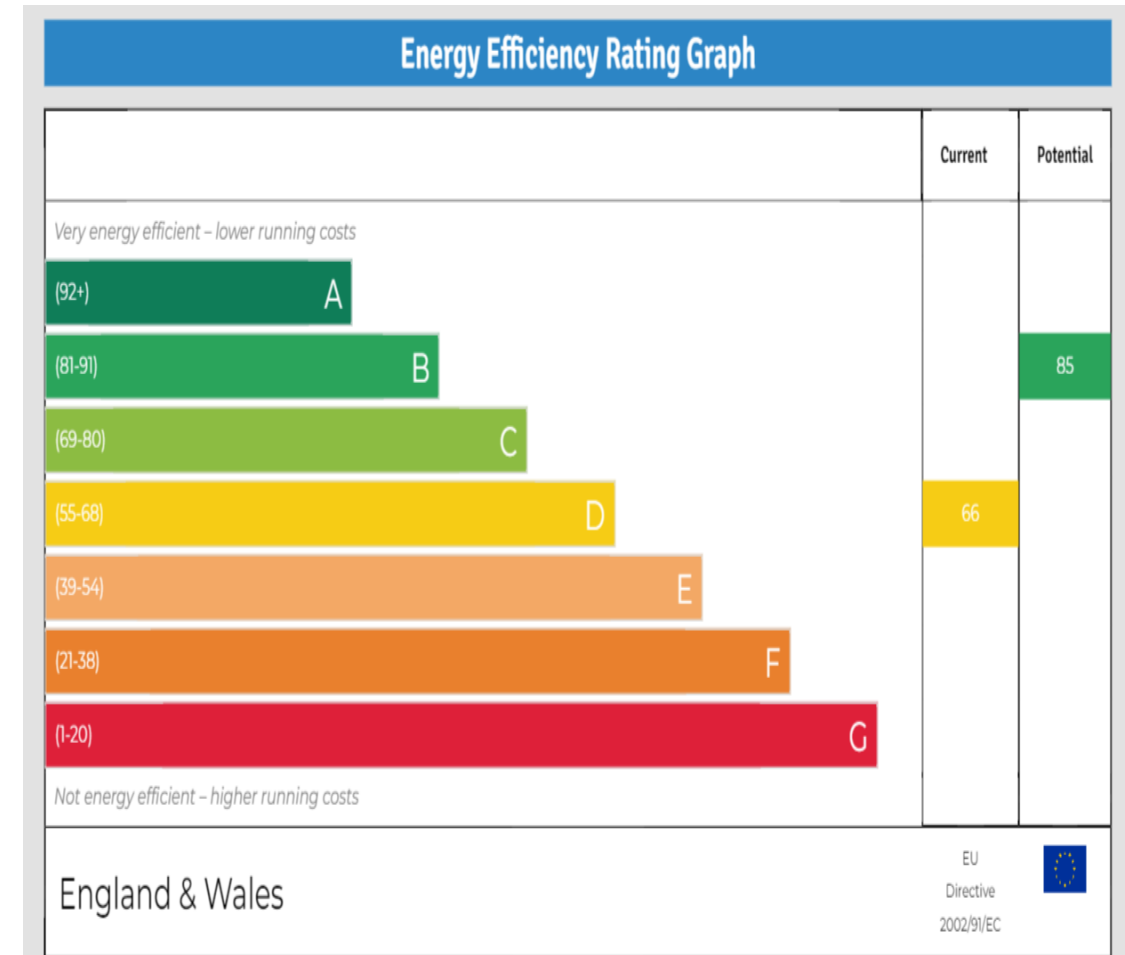
Enfield boasts a proud and distinguished history, home to several country houses and ancient monuments, the area also hosts a notable contingent of famous residents both past and present.

With affordable homes and a safe, green environment, Enfield attracts many buyers pleasantly surprised by the good value of property compared to some of the more pricey neighbouring boroughs.

On the lush, green perimeter of London, Enfield has excellent transport links with a quick and easy train journey into the City and West End.

There are a range of activities to keep residents busy in the borough with seven bustling shopping areas, 900 hectares of parks, three golf clubs, and numerous cinemas, theatres and museums. There is a diverse community residing in the area.

Notable for its range of great schools, vast green spaces and bustling retail centres, as well as good transport links to the rest of the city, Enfield is undoubtedly a thriving place to live and work and proves an excellent choice for first time buyers, families, young professionals and property investors alike."



243-245 Hertford Road
Enfield, EN3 5JJ
0208 804 8000
enfield@castles.london
www.castles.london

All details including floorplans are for representation purposes only and do not constitute a contract or warranty. Whilst every effort is made to ensure accuracy of descriptions and measurements, no responsibility is taken for errors, omissions and misstatements.

rightmove find your happy home
Zoopla Smarter property search
PrimeLocation Find the home you deserve
The Property Ombudsman A free, fair and independent service for buyers, sellers, tenants and landlords of property in the UK.
NAEA National Association of Estate Agents