



Lytchet Way, EN3 5XS

£300,000

Leasehold

Castles



Lytchet Way, EN3 5XS

A chain free 3 bedroom split level ground floor maisonette located off the Hertford Road in Enfield Highway. This would be an ideal family property offering spacious accommodation or a great investment opportunity. Features include: gas central heating, front and rear garden, double glazing, spacious kitchen.

EPC Rating: C
Current: 74 Potential: 78

Council Tax Band: C

Terms of Lease: TBC
Service Charge: TBC
Ground Rent: TBC



£300,000 Leasehold

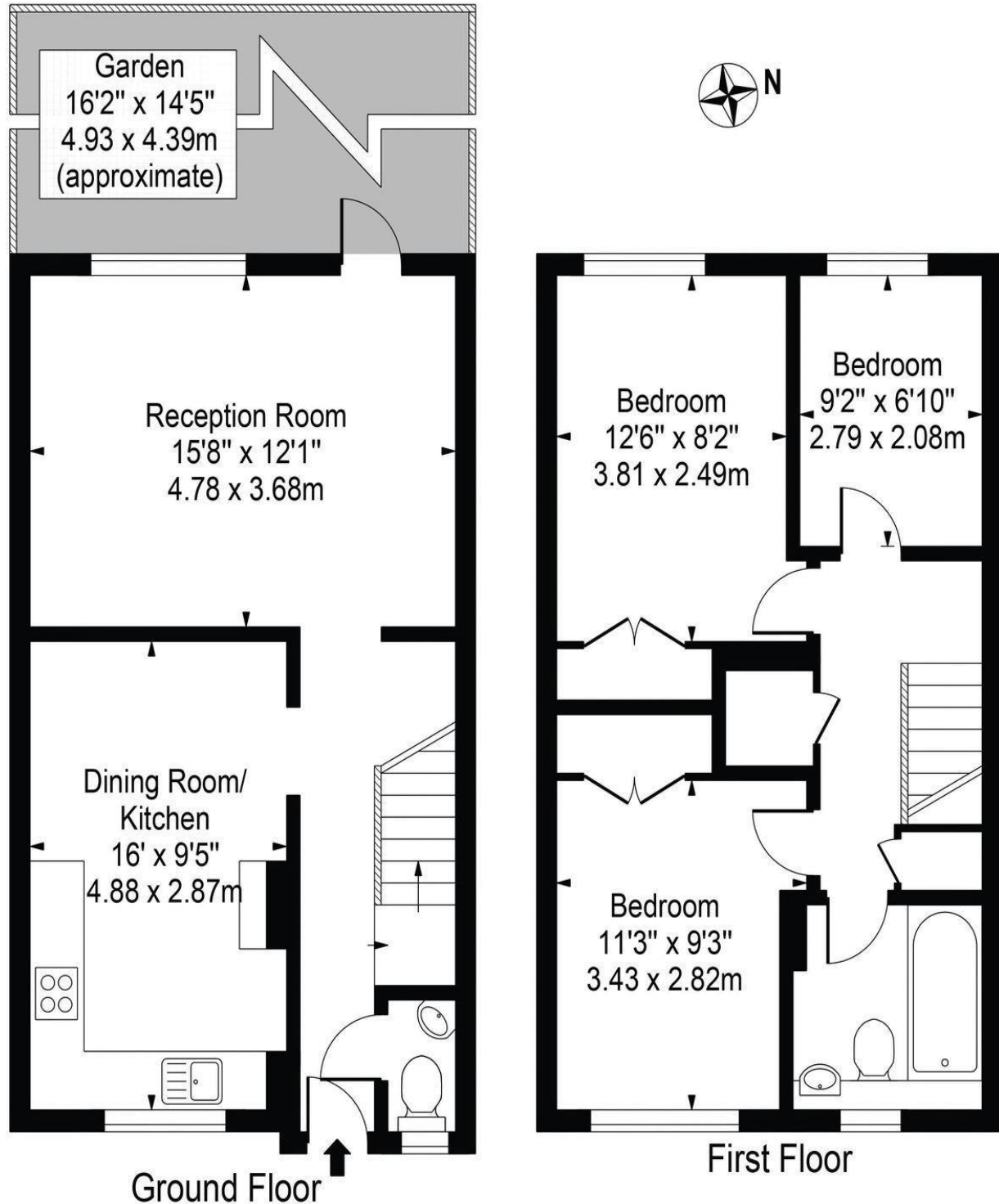
Castles

020 8804 8000
enfield@castles.london



Lytchet Way, EN3 5XS

Approx. Gross Internal Area 902 Sq Ft - 83.80 Sq M



For Illustration Purposes Only - Not To Scale

This floor plan should be used as a general outline for guidance only and does not constitute in whole or in part an offer or contract. Any intending purchaser or lessee should satisfy themselves by inspection, searches, enquiries and full survey as to the correctness of each statement. Any areas, measurements or distances quoted are approximate and should not be used to value a property or be the basis of any sale or let.

An overview of Enfield

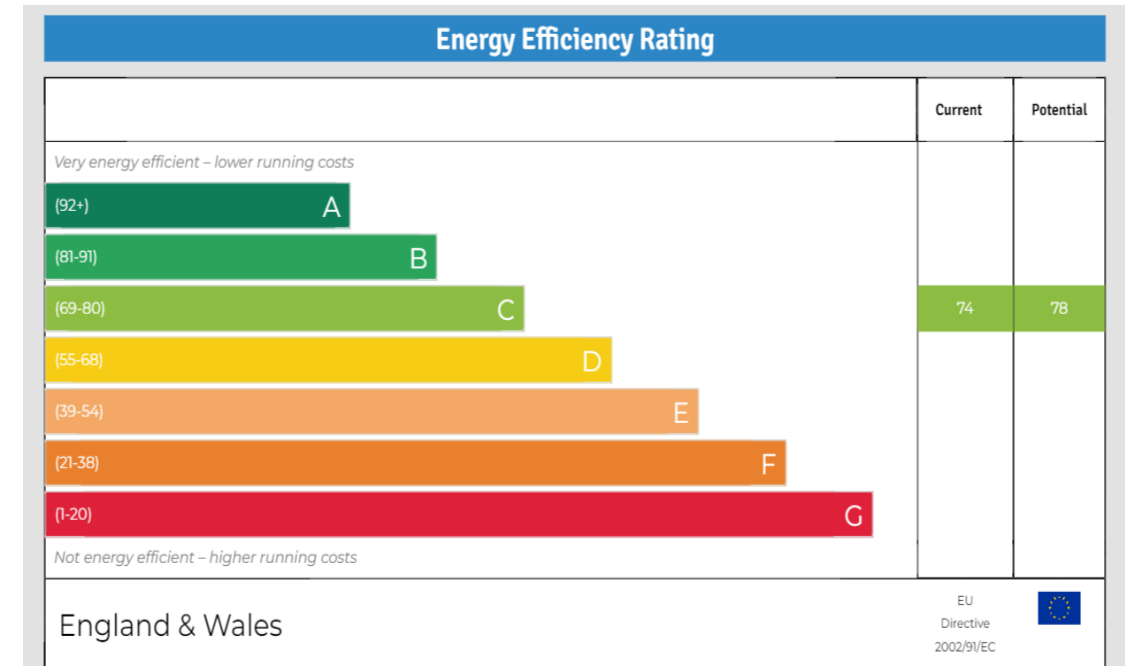
Enfield boasts a proud and distinguished history, home to several country houses and ancient monuments, the area also hosts a notable contingent of famous residents both past and present.

With affordable homes and a safe, green environment, Enfield attracts many buyers pleasantly surprised by the good value of property compared to some of the more pricey neighbouring boroughs.

On the lush, green perimeter of London, Enfield has excellent transport links with a quick and easy train journey into the City and West End.

There are a range of activities to keep residents busy in the borough with seven bustling shopping areas, 900 hectares of parks, three golf clubs, and numerous cinemas, theatres and museums. There is a diverse community residing in the area.

Notable for its range of great schools, vast green spaces and bustling retail centres, as well as good transport links to the rest of the city, Enfield is undoubtedly a thriving place to live and work and proves an excellent choice for first time buyers, families, young professionals and property investors alike."



243-245 Hertford Road
 Enfield, EN3 5JJ
 0208 804 8000
 enfield@castles.london
 www.castles.london

All details including floorplans are for representation purposes only and do not constitute a contract or warranty. Whilst every effort is made to ensure accuracy of descriptions and measurements, no responsibility is taken for errors, omissions and misstatements.

