



Alma Road, EN3

£475,000

Freehold

Castles



Alma Road, EN3

A beautifully presented and extended 3 bedroom end of terraced house located off Green Street within approx 0.3m of Brimsdown BR station (serving London Liverpool Street) and close to a selection of schools, bus routes and Durants Park. An internal viewing is recommended. Features include:- spacious first floor bathroom, through lounge, extended kitchen/diner, large rear garden, gas central heating and double glazing, potential for off street parking STPP.

EPC Rating: D
Current: 65 Potential: 86

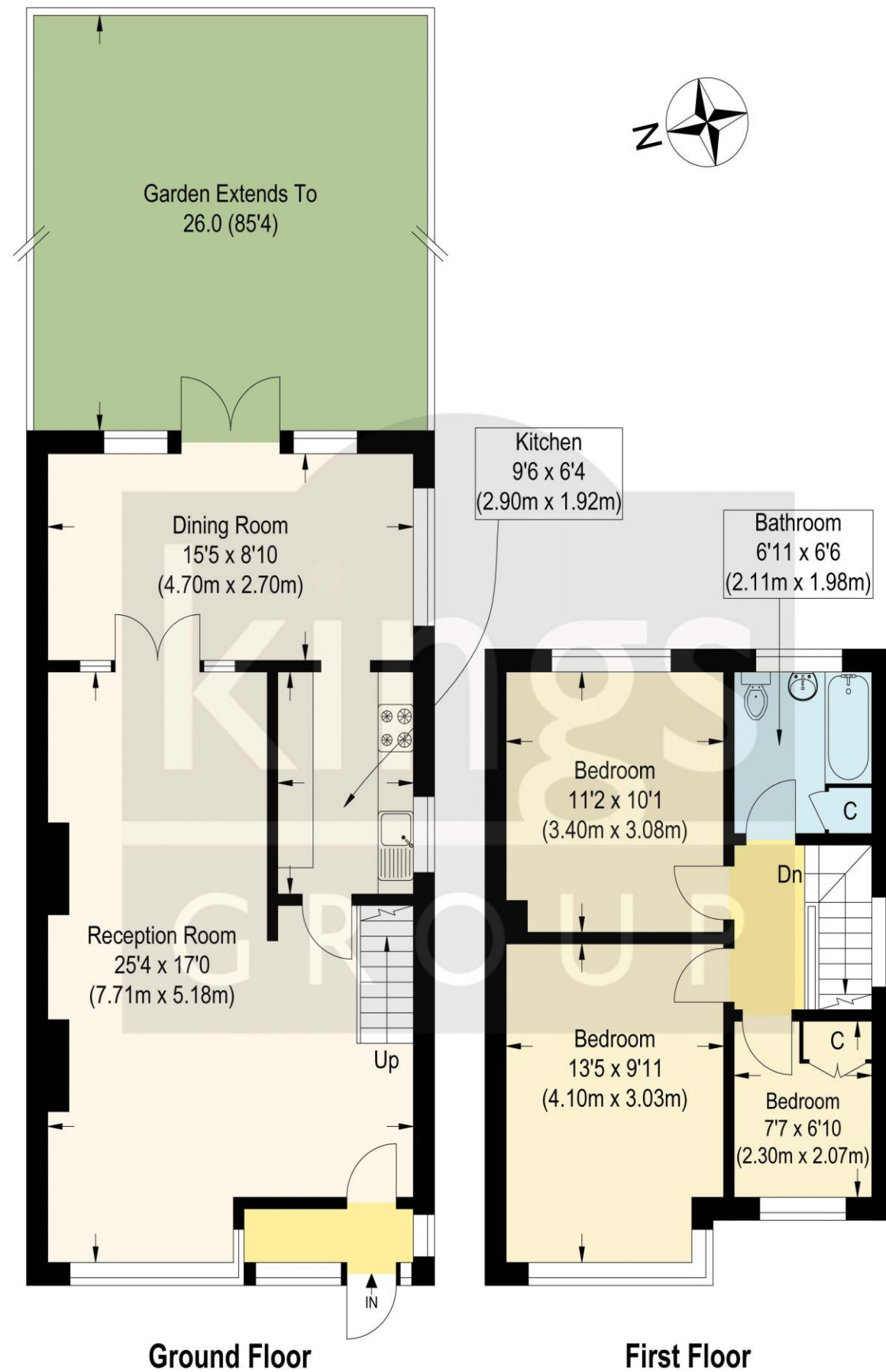
Council Tax Band - D

£475,000 Freehold

Castles

020 8804 8000
enfield@castles.london





Approximate Gross Internal Floor Area : 92.50 sq m / 995.66 sq ft
 Illustration for identification purposes only, measurements are approximate, not to scale.

An overview of Enfield

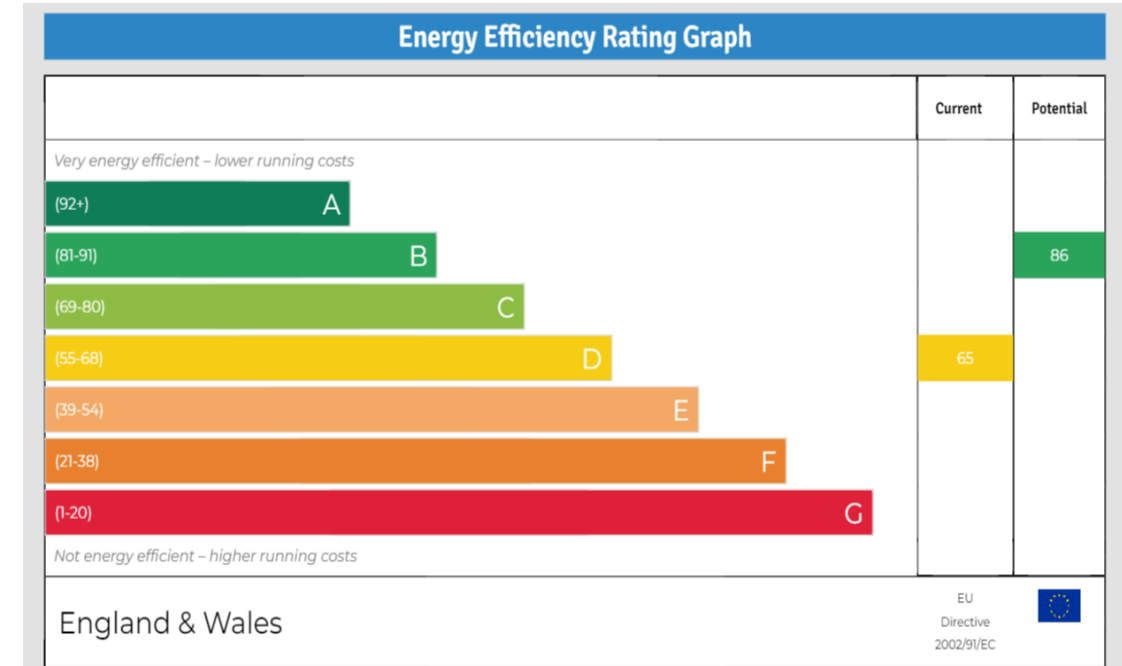
Enfield boasts a proud and distinguished history, home to several country houses and ancient monuments, the area also hosts a notable contingent of famous residents both past and present.

With affordable homes and a safe, green environment, Enfield attracts many buyers pleasantly surprised by the good value of property compared to some of the more pricey neighbouring boroughs.

On the lush, green perimeter of London, Enfield has excellent transport links with a quick and easy train journey into the City and West End.

There are a range of activities to keep residents busy in the borough with seven bustling shopping areas, 900 hectares of parks, three golf clubs, and numerous cinemas, theatres and museums. There is a diverse community residing in the area.

Notable for its range of great schools, vast green spaces and bustling retail centres, as well as good transport links to the rest of the city, Enfield is undoubtedly a thriving place to live and work and proves an excellent choice for first time buyers, families, young professionals and property investors alike."



243-245 Hertford Road
 Enfield, EN3 5JJ
 0208 804 8000
 enfield@castles.london
 www.castles.london

All details including floorplans are for representation purposes only and do not constitute a contract or warranty. Whilst every effort is made to ensure accuracy of descriptions and measurements, no responsibility is taken for errors, omissions and misstatements.

find your happy
 Smarter property search
 Find the home you deserve
 A free, fair and independent service for buyers, sellers, tenants and landlords of property in the UK.
 National Association of Estate Agents
 LICENSED MEMBER